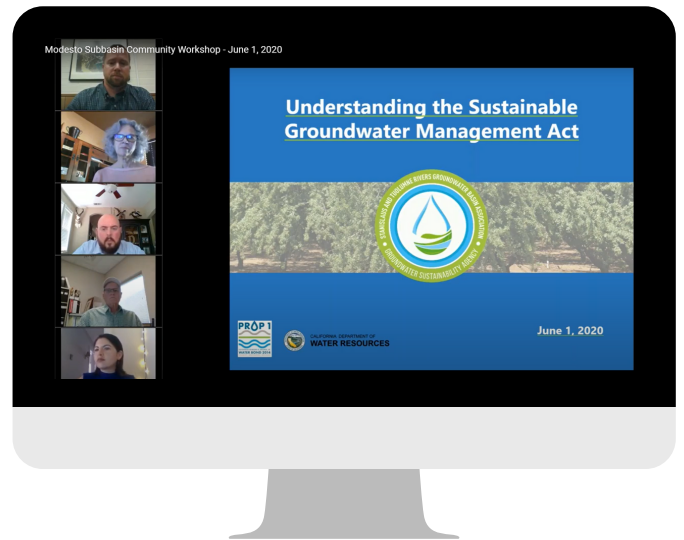




STANISLAUS AND TUOLUMNE RIVERS GROUNDWATER BASIN ASSOCIATION GROUNDWATER SUSTAINABILITY AGENCY

STRGBA GSA HOSTED FIRST VIRTUAL PUBLIC WORKSHOP

STRGBA GSA held its first virtual public workshop on June 1, 2020. There was a series of presentations that covered the history of the STRGBA GSA, a SGMA overview, the multistep process for developing the Groundwater Sustainability Plan, Stakeholder Survey results and opportunities on how the public can get involved. More than 40 individuals participated in the the workshop and asked several questions related to historical overdraft in the subbasin, interconnectivity of groundwater and the Tuolumne River, and funding for monitoring well installations.



If you're interested in learning more, you can watch the first workshop at www.strgba.org. Stay tuned for more details on the next workshop this fall!

MODESTO SUBBASIN COMMUNICATION AND ENGAGEMENT PLAN

With input from stakeholders and STRGBA GSA member agencies, a Communication and Engagement Plan for the Modesto Subbasin was developed. This plan includes a high-level overview of potential outreach strategies, tactics and tools that support generating awareness of the STRGBA GSA and the GSP process currently underway.

The Modesto Subbasin Communication and Engagement Plan is available to view at www.strgba.org.



OUTREACH TOOLS



OUTREACH ACTIVITIES



GSP COMMENT PROCESS
ADOPTION OUTREACH

COMMONLY USED TERMS

GSA - Groundwater Sustainability Agency

GSP - Groundwater Sustainability Plan

SGMA - Sustainable Groundwater Management Act

STRGBA - Stanislaus and Tuolumne Rivers Groundwater Basin Association

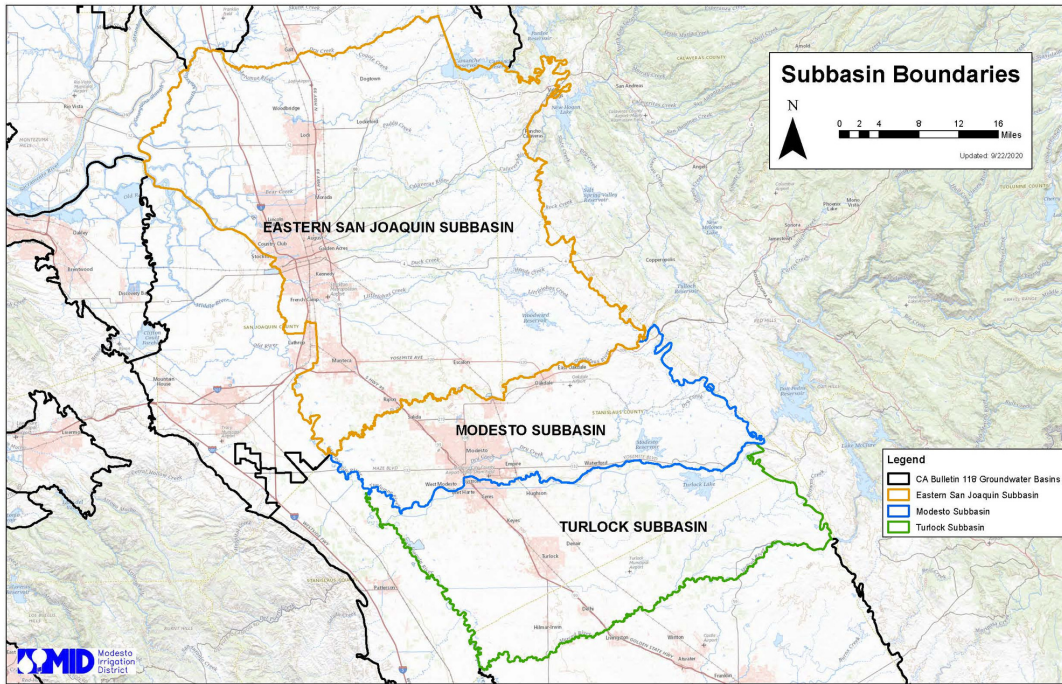
FALL 2020

WWW.STRGBA.ORG | STRGBA@MID.ORG

INTERBASIN COORDINATION

SGMA requires adjoining GSAs that share a common boundary to coordinate their research and data collection efforts to ensure that the actions of one GSA don't negatively impact another GSA. This summer, the STRGBA GSA held two meetings with adjoining GSAs.

In May, STRGBA GSA met with the East Turlock and West Turlock Subbasin GSAs to provide an update on GSP preparation, discuss preliminary groundwater modeling results and explore future cooperation opportunities between the Modesto and Turlock Subbasins. The two GSAs agreed to coordinate future monitoring well locations along the Tuolumne River and may enter into a Memorandum of Intent to memorialize this agreement.



STRGBA GSA also held an interbasin coordination meeting with the Eastern San Joaquin (ESJ) Groundwater Authority in June. The ESJ shared their recent annual report which summarizes groundwater extraction, elevations and storage along with 2019 surface water supplies. STRGBA GSA and ESJ agreed to refine the accuracy of their models across the Stanislaus River boundary and to continue to meet periodically.

USGS WELL SAMPLING STUDY

The U.S. Geological Survey (USGS) is looking for volunteers with domestic (private) wells for sampling of shallow groundwater in the Modesto, Turlock and Merced groundwater basins. Due to COVID restrictions, the USGS is not able to do their usual door-to-door canvassing at this time, so they are looking for well owners to volunteer to have their well sampled for this study.

The USGS samples for a wide range of analytes, including nutrients, trace elements, radionuclides, VOC's, pesticides, and age dating tracers, among other things. All well owners who participate in the study will receive a copy of all the results.

Participation in this study will not only provide useful data to well owners, but will also help characterize shallow groundwater quality in Stanislaus and Merced counties. These results will also be used to provide information on the long-term quality of water reaching deeper public supply wells.

If you're interested in volunteering or would like more information on this study, please visit <https://ca.water.usgs.gov/projects/gama/gama-domestic-groundwater-well-sampling.html>.